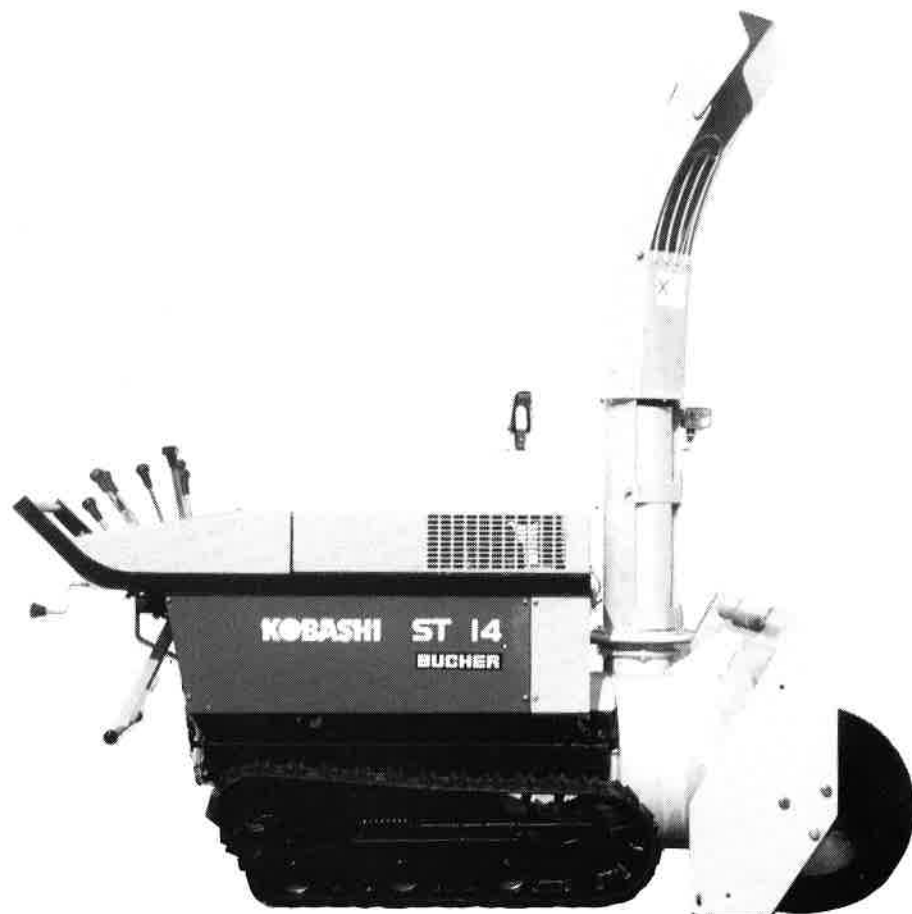

BUCHER

KOBASHI ST 14

Ersatzteilliste

Liste des pièces de rechange

Parts List



INHALT

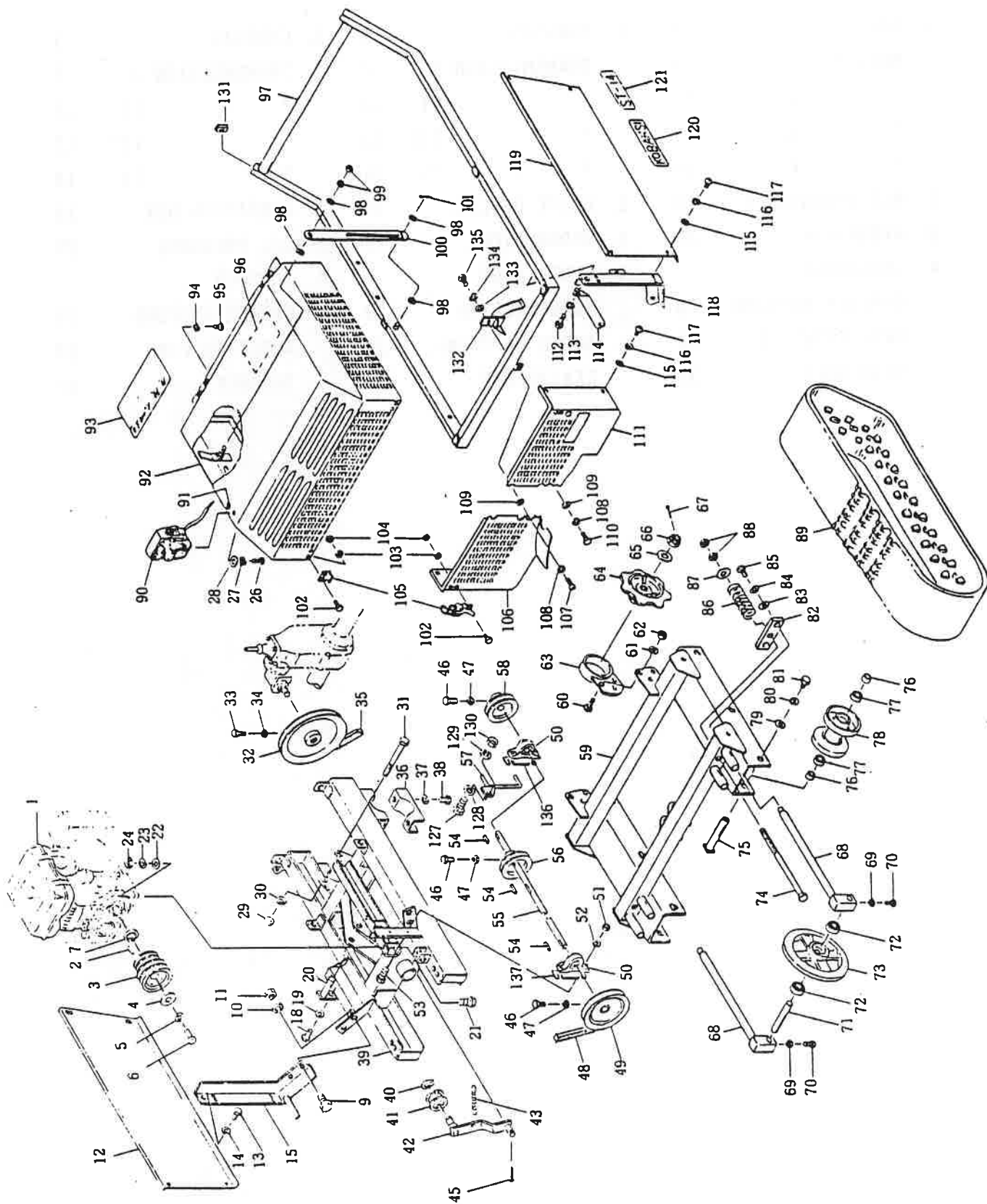
1. CHASSIS	1
ANTRIEB I	7
" II	11
" III	13
" IV	14
2. BEDIENUNGSPULT	19
3. HYDRAULIK	25
4. SCHLEUDER	
BLAESER ANTRIEB	29
ANTRIEBSWELLE	33
SCHLEUDER	37

SOMMAIRE

1. CHASSIS	1
TRANSMISSION I	7
" II	11
" III	13
" IV	14
2. BOITE DE CDE.	19
3. HYDRAULIQUE	25
4. CENTRIFUGE	
TRANSMISSION	29
ARBRE DE TRANS.	33
CENTRIFUGE	37

CONTENTS

1. CHASSIS	1
TRANSMISSION I	7
" II	11
" III	13
" IV	14
2. OPERATION BOX	19
3. OIL PRESSURE	25
4. THROWER	
BLOWER DRIVING	29
AUGER DRIVING	33
THROWER	37



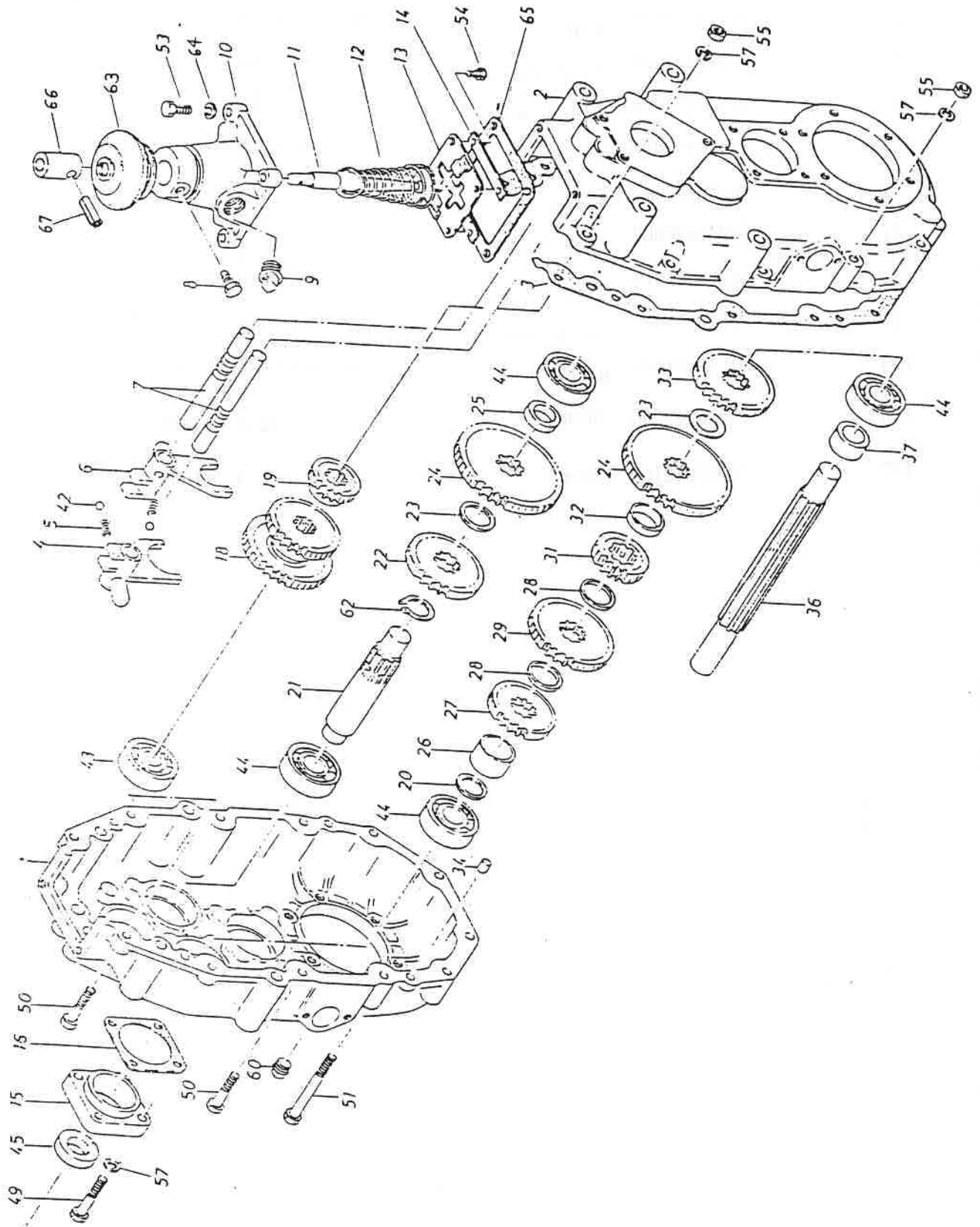
RANK	REF No.	CODE No.	PART No.	PART NAME DESCRIPTION	Qty/unit	MODEL
	1		78950011600	Engine KF150G-SX	1	
	2		78950011800	Key 10X8X45	1	
	3		78950011400	Engine sheave	1	
	4		78950011700	Plain washer $\phi 11X \phi 45Xt5$	1	
	5		92121101010	Spring washer M10	1	
	6		90124510025	Bolt M10x25 P1.25	1	
	7		78950011900	Spacer	1	
	9		90124110020	Bolt M10X20 P1.5	4	
	10		92121101010	Spring washer M10	4	
	11		91422411010	Nut M10 P1.5	4	
	12		78950011100	Side cover (R)	1	
	13		90124110020	Bolt M10x20 P1.5	3	
	14		92121101010	Spring washer M10	3	
	15		78950010600	Cover stand (F:R)	1	
	18		90124108015	Bolt M8x15 P1.25	1	
	19		92121101008	Spring washer M8	1	
	20		78930014400	Cylinder pin	1	
	21		90128212050	Bolt M12X50 P1.75 8T	4	
	22		92410201012	Plain washer M12	4	
	23		92121101012	Spring washer M12	4	
	24		91422411012	Nut M12 P1.75	4	
	26		90124108020	Bolt M8X20 P1.25	1	
	27		92121101008	Spring washer M8	1	
	28		92410201008	Plain washer M8	1	
	29		91422411010	Nut M10 P1.5	2	
	30		92121101010	Spring washer M10	2	
	31		90124110135	Bolt M10x135 P1.5	2	

RANK	REF No.	CODE No.	PART No.	PART NAME DESCRIPTION	Qty/unit	MODEL
	32		78930013000	Sheave	1	
	33		90128208025	Bolt M8×25 P1.25 8T	1	
	34		91422411008	Nut M8 P1.25	1	
	35		95704300051	V Belt R-SB51	1	
	36		78930014000	Mission bracket	2	
	37		92121101010	Spring washer M10	4	
	38		90124110025	Bolt M10×25 P1.5	4	
	39		78950010502	Frame	1	
	40		93710000015	Snap ring S15	1	
	41		78920015700	Idler YTPS50-15	1	
	42		78950012200	Idler arm (C)	1	
	43		33506002000	Spring	1	
	44					
	45		93010003030	Split pin $\varnothing 3 \times 30$	1	
	46		90128208025	Bolt M8×25 P1.25 8T	3	
	47		91422411008	Nut M8 P1.25	3	
	48		95704300032	V Belt R-SB32	1	
	49		78930012602	Sheave (B5.5)	1	
	50		95810110310	Bearing unit UBPP203	2	
	51		91422411008	Nut M8 P1.25	4	
	52		92121101008	Spring washer M8	4	
	53		90124108020	Bolt M8×20 P1.25	4	
	54		78930013400	Key 5×5×25	3	
	55		78950011501	Axle shaft	1	
	56		78930012701	Sheave (A4)	1	
	57		78950010400	Belt finger	1	
	58		78930012801	Sheave (B4)	1	
	59		78950010100	Crawler frame	1	
	60		90124110030	Bolt M10×30 P1.5	6	
	61		92121101008	Spring washer M10	6	
	62		91422411010	Nut M10 P1.5	6	

RANK	REF No.	CODE No.	PART No.	PART NAME DESCRIPTION	Qty/unit	MODEL
	63		78930014101	Mission support	2	
	64		78930010200	Sprocket	2	
	65		78930015600	Plain washer	2	
	66		91712121216	Nut M16 P2.0	2	
	67		93010004030	Split pin $\varnothing 4 \times 30$	2	
	68		78930010601	Idler metal	4	
	69		91422411008	Nut M8 P1.25	4	
	70		90124108020	Bolt M8 \times 20 P1.25	4	
	71		78930011200	Front idler shaft	2	
	72		938060042RS	Bearing #60042RS	4	
	73		78930010300	Front idler	2	
	74		78930010800	Tension bolt	2	
	75		78930010501	Track roller shaft	6	
	76		78950010200	Spacer	12	
	77		938060032RS	Bearing #60032RS	12	
	78		78930010400	Track roller	6	
	79		78920011300	Plain washer $\varnothing 11 \times \varnothing 30 \times 4.5t$	6	
	80		92121101010	Spring washer M10	6	
	81		90124110015	Bolt M10 \times 15 P1.5	6	
	82		78930010700	Idler bracket	2	
	83		78920011300	Plain washer $\varnothing 11 \times \varnothing 30 \times 4.5t$	4	
	84		92121101010	Spring washer M10	4	
	85		90124110015	Bolt M10 \times 15 P1.5	4	
	86		78930010900	Spring	2	
	87		78920011400	Plain washer $\varnothing 13 \times \varnothing 47 \times 4.5t$	2	
	88		91422411012	Nut M12 P1.75	4	
	89		78930013700	Rubber crawler 200 \times 72P \times 30	2	
	90		78930080500	Light R	1	
	91		78920014900	Grommet $\varnothing 6.5 \times 10$	1	
	92		78950011301	Engine cover	1	
	93		99905024000	Sticker	1	

RANK	REF No.	CODE No.	PART No.	PART NAME DESCRIPTION	Qty/unit	MODEL
	94		92121101006	Spring washer	M6 4	
	95		90124106015	Bolt	M6×15 P1.0 4	
	96		99905083000	Sticker	1	
	97		78950010800	Railing	1	
	98		96601000008	Rubber washer	M8 4	
	99		91422411008	Nut	M8 P1.25 2	
	100		78920013300	Cover stopper	1	
	101		93010002015	Split pin	∅2×15 1	
	102		90124105010	Bolt	M5×10 P0.8 8	
	103		92121101005	Spring washer	M5 8	
	104		91422411005	Nut	M5 P0.8 8	
	105		78930015100	Spring	C148-1 2	
	106		78950010900	Front cover (R)	1	
	107		90732106010	Machine screw	M6×10 P1.0 1	
	108		92121101006	Spring washer	M6 2	
	109		92410201006	Plain washer	M6 2	
	110		90124106010	Bolt	M6×10 P1.0 1	
	111		78950011000	Front cover (L)	1	
	112		90124110025	Bolt	M10×25 P1.5 1	
	113		92121101010	Spring washer	M10 1	
	114		78930014301	Spring bracket	1	
	115		92410201006	Plain washer	M6 12	
	116		92121101006	Spring washer	M6 12	
	117		90732106010	Machine screw	M6×10 P1.0 12	
	118		78950010700	Cover stand (F·L)	1	
	119		78950011201	Side cover (L)	1	
	120		99900004000	Sticker	2	
	121		99909044000	Sticker	2	

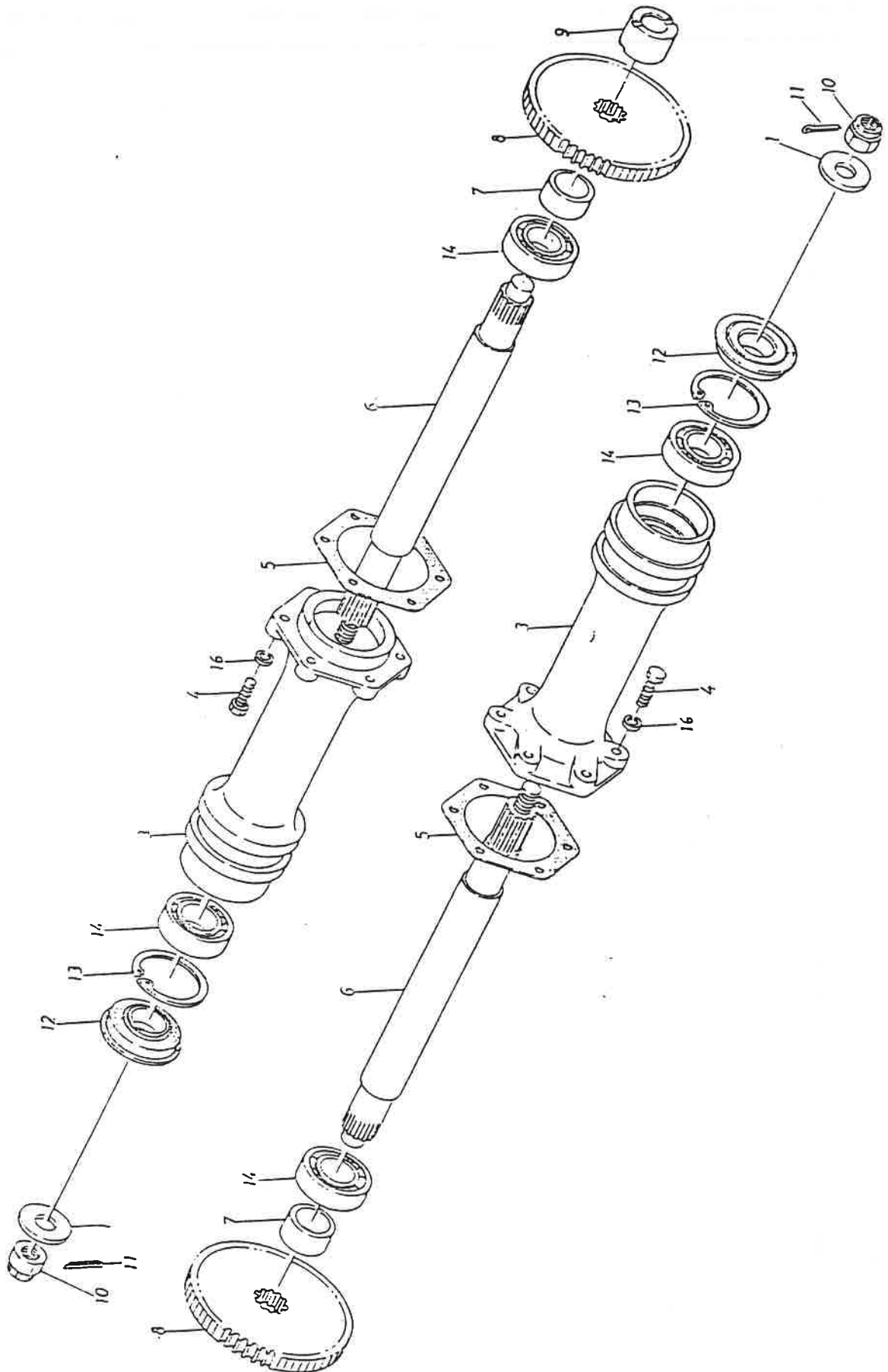
RANK	REF No.	CODE No.	PART No.	PART NAME DESCRIPTION	Qty/unit	MODEL
	127		90124108020	Bolt M8×20 P1.25	1	
	128		92410201008	Plain washer M8	1	
	129		92121101008	Spring washer M8	1	
	130		91422411008	Nut M8 P1.25	1	
	131		78920059000	Rubber cap	2	
	132		78950020800	Belt finger	1	
	133		92410201010	Plain washer M10	1	
	134		92121101010	Spring washer M10	1	
	135		90124110020	Bolt M10×P1.5×20	1	
	136		78950012000	Shim t2.0	1set	
	137		78950012100	Shim t0.5	1set	



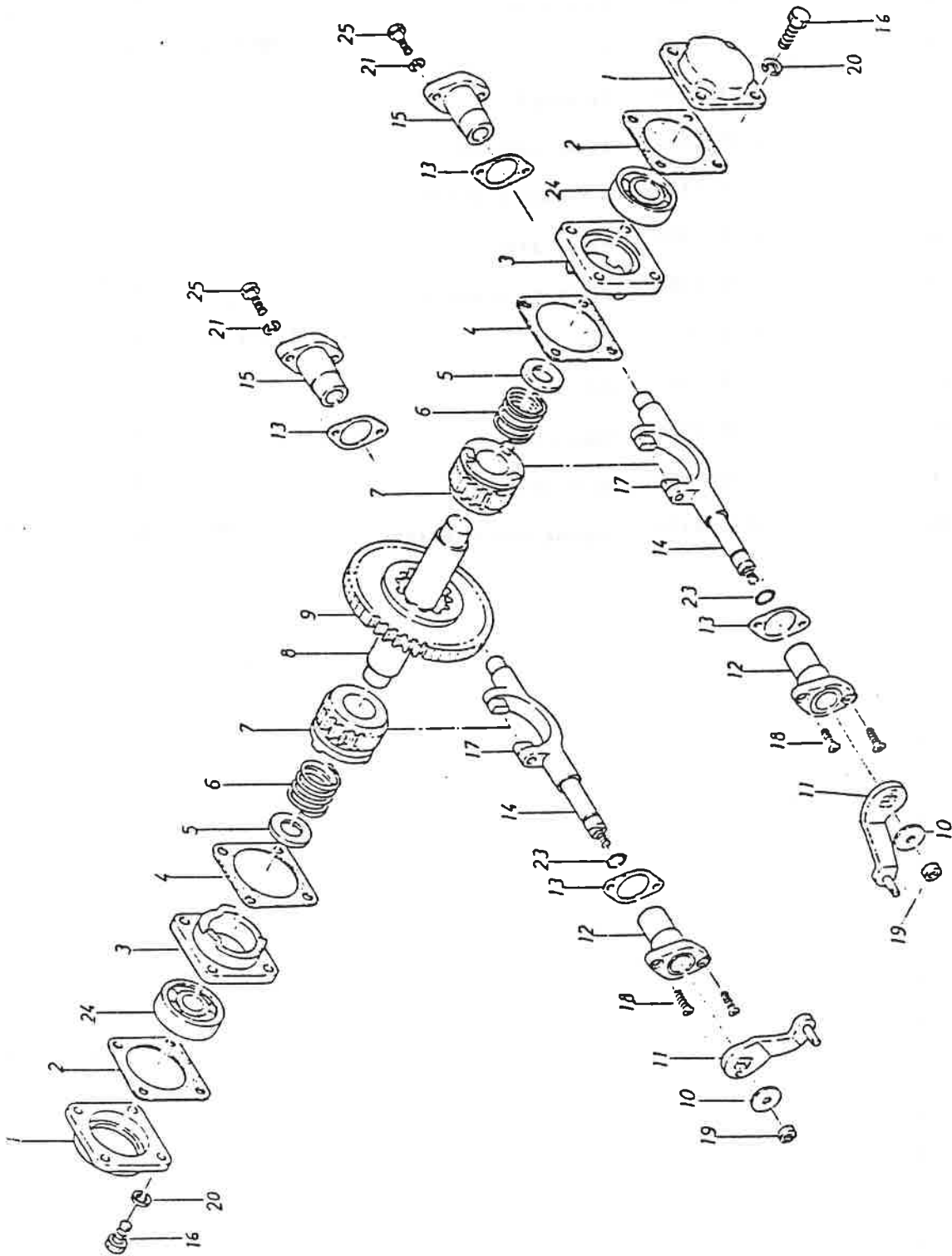
RANK	REF No.	CODE No.	PART No.	PART NAME DESCRIPTION	Qty/unit	MODEL
	1		11357-101	Mission case Left	1	
	2		1135-1102	Mission case Right	1	
	3		1134-2103	Packing A	1	
	4		1135-3401	Shift folk A	1	
	5		1134-4408	Spring	1	
	6		1134-3403	Shift folk B	1	
	7		1134-4405	Shift folk shaft	1	
	8		1135-4413	Set bolt	1	
	10		1135-3402	Shifter case	1	
	11		1135-4403	Shift lever W	1	
	12		1135-4404	Spring	1	
	13		1134-4404	Guide plate	1	
	14		1134-4410	Guide seat plate	2	
	15		1134-4106	Seal housing	1	
	16		1134-4105	Packing C	1	
	18		11351-4240	Drive high gear	1	
	19		1134-4204	Drive low gear	1	
	21		1134-4213	Back gear shaft	1	
	22		11357-202	ID Back gear S	1	
	23		1134-4216	Distance piece B	3	
	24		1134-4207	ID Back gear & low gear	2	
	25		1134-4217	Distance piece C	1	
	26		11351-4241	Distance piece E	1	
	27		1134-4205	Driven top gear	1	
	28		11351-4245	Distance piece G	1	
	29		1134-4206	Driven second gear	1	
	31		1134-4209	Second shaft pinion	1	
	32		11351-4242	Distance piece F	1	
	33		11357-201	DV back gear	1	
	34		1134-4108	Knock pin	2	
	36		1134-3201	Second shaft	1	

RANK	REF No.	CODE No.	PART No.	PART NAME DESCRIPTION	Qty/unit	MODEL
	37		1134-4215	Distance piece A	1	
	42		1134-9417	Steel ball	2	
	43		1134-9219	Ball bearing	1	
	44		1134-9220	Ball bearing	6	
	45		1134-9122	Oil seal	1	
	49		1134-9115	Bolt	M8×35	4
	50		1134-9115	Bolt	M8×35	6
	51		1135-9117	Bolt	M8×70	4
	53		1135-9410	Bolt	M8×25	4
	54		1134-9416	Bolt	M5×14	4
	55		1134-9116	Nut	M8	12
	57		1134-9118	Spring plain washer	M8 P1.5	16
	60		1134-9121	Plug		3
	62		1134-9227	Snap ring		1
	63		1135-4405	Boots		1
	64		1135-9411	Spring plain washer	M8	4
	65		1135-4112	Packing W		1

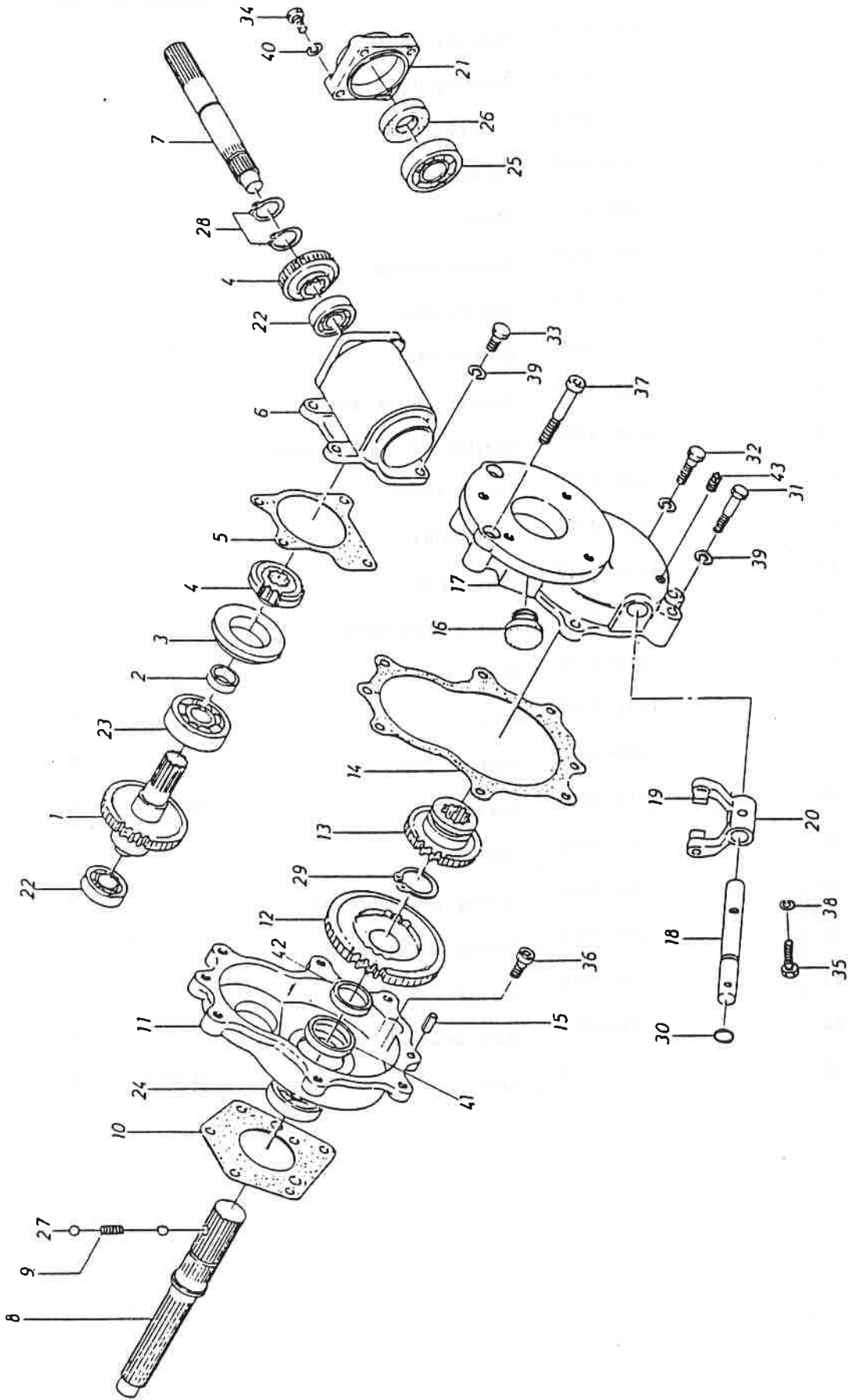
RANK	REF No.	CODE No.	PART No.	PART NAME DESCRIPTION	Qty/unit	MODEL	



RANK	REF No.	CODE No.	PART No.	PART NAME DESCRIPTION	Qty/unit	MODEL
	1		1135-4507	Wheel shaft washer	2	
	3		11357-501	Axle pipe	2	
	4		1134-9109	Bolt M8×30	12	
	5		1134-4510	Packing E	2	
	6		1135-3550	Wheel shaft CI	2	
	7		11351-4529	Distance piece H	2	
	8		1135-4205	Wheel gear	2	
	9		1135-4505	Distance piece A	1	
	10		1135-9511	Nut M16×P1.2	2	
	12		1135-9525	Oil seal	2	
	13		1135-9526	Snap ring	2	
	14		1135-9509	Ball bearing	4	
	16		1135-9118	Spring plain washer M8	12	



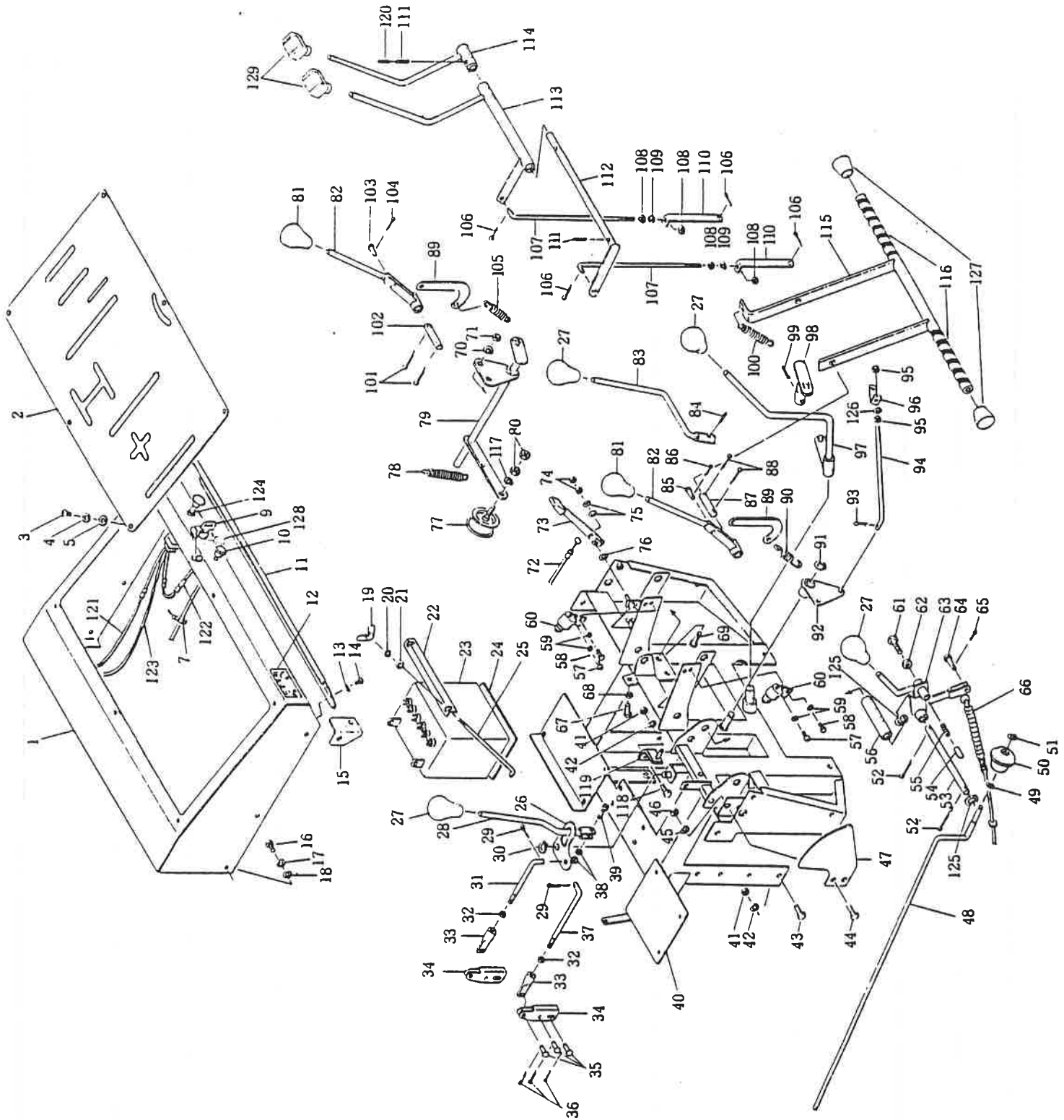
RANK	REF No.	CODE No.	PART No.	PART NAME DESCRIPTION	Qty/unit	MODEL	
	1		1135-4106	Bearing housing	2		
	2		1135-4105	Packing H	2		
	3		1135-4705	Clutch lock	2		
	4		1135-4105	Packing G	2		
	5		1135-4206	Shim	2		
	6		1135-4707	Clutch spring	2		
	7		1135-4203	Clutch gear	2		
	8		1135-4204	Clutch shaft	1		
	9		1135-4202	Center clutch gear	1		
	10		1135-4704	Shifter nut lock washer	2		
	11		1135-4702	Clutch lever	2		
	12		1135-4712	Fork holder	2		
	13		1134-4313	Packing D	4		
	14		1135-3701	Side clutch shifter	2		
	15		1135-4711	Shift supporter	2		
	16		1131-9107	Bolt	8		
	17		1135-4703	Shifter pin	4		
	18		1134-9320	Screw	M6×20	4	
	19		1135-9708	Nut	M8	2	
	20		1134-9118	Spring plain washer	8		
	21		1135-9714	Spring plain washer	4		
	23		1135-9709	O ring	2		
	24		1134-9220	Ball bearing	2		
	25		1135-9713	Bolt	M6×20	4	



RANK	REF No.	CODE No.	PART No.	PART NAME DESCRIPTION	Qty/unit	MODEL
	1		11357-902	Input shaft COMP	1	
			11357-903	Input shaft	1	
			11357-4908	Sub drive high gear	1	
2			1134-4605	Shim B	1	
3			1134-4107	Guide bush	1	
4			1134-4603	Bevel gear	2	
5			1134-4607	Packing G	1	
6			1134-3601	Bevel gear case	1	
7			1134-4602	Bevel gear shaft	1	
8			11343-3231	Drive shaft	1	
9			11343-4808	Spring	1	
10			11343-4904	Packing B	1	
11			11343-2901	Sub mission case A	1	
12			11357-904	Sub driven low gear	1	
13			11343-4906	Sub driven top gear	1	
14			11343-4903	Packing A	1	
15			1134-4108	Knock pin	2	
16			1134-4114	Oil filler plug	1	
17			11357-901	Sub mission case B	1	
18			11343-4911	Shift rod	1	
19			11351-4730	Shifter pin	2	
20			11343-4912	Sub shift fork	1	
21			1134-4604	Oil seal holder	1	
22			1134-9609	Ball bearing	2	
23			1134-9220	Ball bearing	1	
24			11343-9201	Ball bearing	1	
25			1134-9608	Ball bearing	1	
26			1134-9610	Oil seal	1	
27			11343-9805	Steel ball	2	
28			1134-9611	Snap ring	2	
29			1134-9227	Snap ring	1	

RANK	REF No.	CODE No.	PART No.	PART NAME DESCRIPTION	Qty/unit	MODEL
	30		1134-9321	O ring	1	
	31		11343-9902	Bolt M8×45	1	
	32		1134-9109	Bolt M8×30	3	
	33		1134-9128	Bolt M8×20	4	
	34		1134-9612	Bolt M6×30	4	
	35		11343-9903	Bolt M6×25	1	
	36		11343-9806	Bolt with hole M8×20	4	
	37		1200-0855	Bolt with hole M8×55	2	
	38		1134-9414	Spring plain washer	1	
	39		1134-9118	Spring plain washer	8	
	40		1134-9615	Spring plain washer	4	
	41		652A-30405	Oil seal	1	
	42		11357-905	Spacer	1	
	43		7564-0200	Plug	1	

RANK	REF No.	CODE No.	PART No.	PART NAME DESCRIPTION	Qty/unit	MODEL	



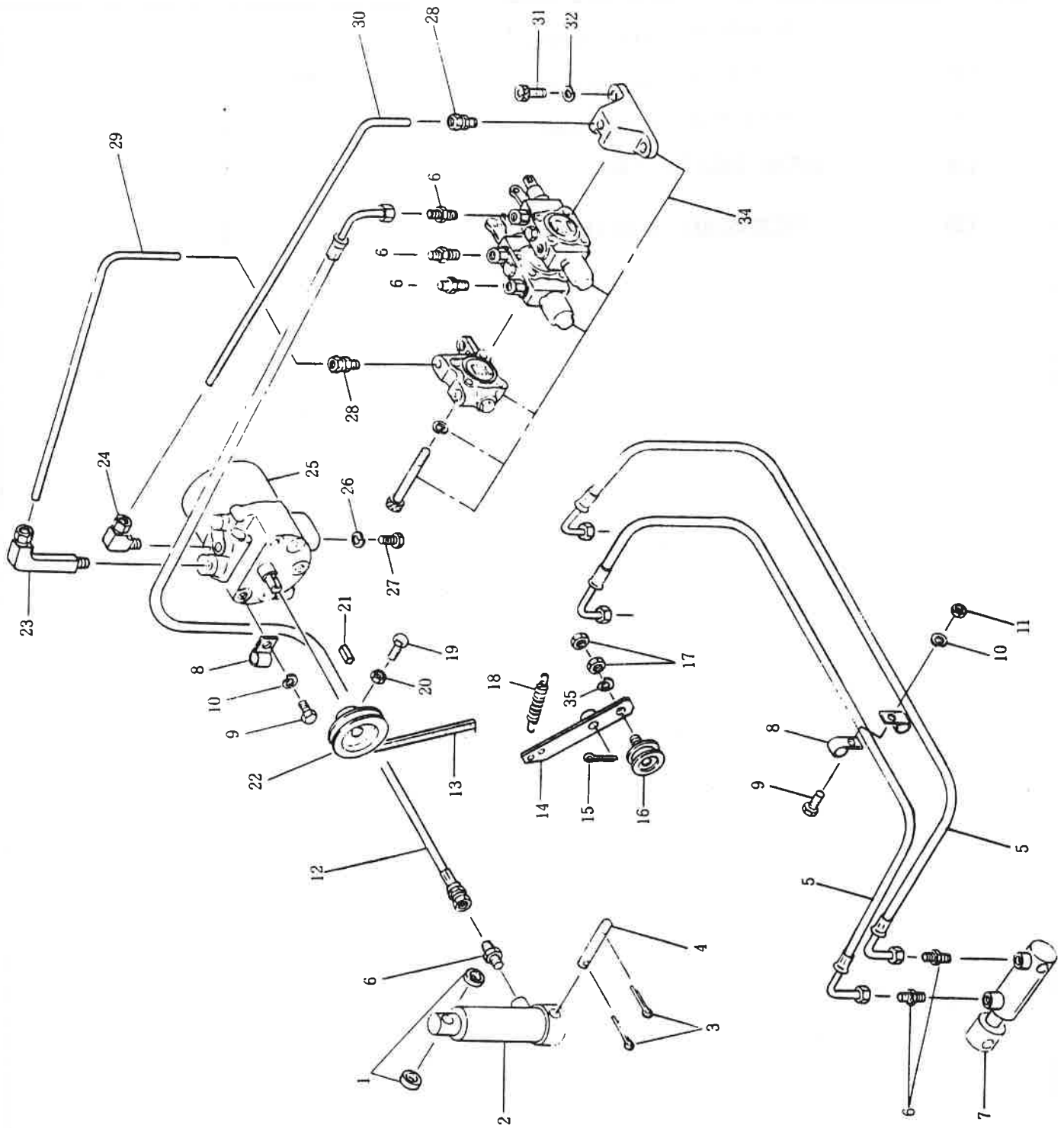
RANK	REF No.	CODE No.	PART No.	PART NAME DESCRIPTION	Qty/unit	MODEL
	1		78950051000	Operation box	1	
	2		78930051901	Operation panel	1	
	3		90715106012	Machine screw M6×12 P1.0	6	
	4		92121101006	Spring washer M6	6	
	5		92410201006	Plain washer M6	6	
	6			Sticker	1	
	7		78920055900	Band PAN-TY N05	2	
	8					
	9			Engine key	1	
	10		78950050600	Choke wire	1	
	11		78930051801	Operation box cover	1	
	12		99910021000	Sticker	1	
	13		92410201003	Plain washer M3	4	
	14		91115203008	Tapping screw M3×8	4	
	15		78930022701	Plain washer of chute handle	1	
	16		90124110015	Bolt M10×15 P1.5	4	
	17		92121101010	Spring washer M10	4	
	18		92410201010	Plain washer M10	4	
	19		91922310008	Nat M8 P1.25	2	
	20		92121101008	Spring washer M8	2	
	21		92410201008	Plain washer M8	2	
	22		78930013201	Battery holder	1	
	23		78930015400	Battery 13V30A	1	
	24		78930014800	Battery rubber	1	
	25		78930013300	L Bolt	2	
	26		78920052611	Link(B)	1	
	27		95430002012	Grip (Black) ∅12	4	
	28		78930051300	Control lever	1	
	29		93010002514	Split pin ∅2.5×14	2	
	30		93710000012	Snap ring S12	1	
	31		78930053500	Lod (R)	1	

RANK	REF No.	CODE No.	PART No.	PART NAME DESCRIPTION	Qty/unit	MODEL
	32		91422411008	Nut M8 P1.25	2	
	33		78920052701	Connector	2	
	34		78920052500	Link (A)	2	
	35		78920052000	Pin $\varnothing 6 \times 18$	6	
	36		93010002514	Split pin $\varnothing 2.5 \times 14$	6	
	37		78930053600	L Rod (L)	1	
	38		91422411006	Nut M6 P1.0	2	
	39		90401006035	Cap screw M6 \times 35 P1.0	1	
	40		78930050104	Upper flame	1	
	41		91422411010	Nut M10. P1.5	4	
	42		92121101010	Spring washer M10	4	
	43		90124110025	Bolt M10 \times 25 P1.5	3	
	44		90124108025	Bolt M8 \times 25 P1.25	2	
	45		92121101008	Spring washer M8	2	
	46		91422411008	Nut M8 P1.25	2	
	47		78930053402	Plunger Plate	1	
	48		78950050400	Chute handle	1	
	49		92410201008	Plain washer M8	1	
	50		32306009000	Grip	1	
	51		93710000008	Snap ring S8	1	
	52		93010003230	Split pin $\varnothing 3.2 \times 30$	2	
	53		78930052700	Pin	1	
	54		78920057100	Adapter	1	
	55		78920057000	Spring	1	
	56		78930052800	Collar	1	
	57		90715105010	Machine screw M5 \times 10 P0.8	2	
	58		90124105010	Bolt M5 \times 10 P0.8	2	
	59		92121101005	Spring washer M5	4	
	60		78920054000	Limit switch B1799A-00	2	
	61		90124112030	Bolt M12 \times 30 P1.75	1	
	62		92121101012	Nnt M12 P1.75	1	

RANK	REF No.	CODE No.	PART No.	PART NAME DESCRIPTION	Qty/unit	MODEL
	63		78930051411	Deflector lever	1	
	64		26006048000	Pin $\varnothing 8 \times 25$	1	
	65		93010002514	Split pin $\varnothing 2.5 \times 14$	1	
	66		78950050500	Deflector wire	1	
	67		90124110030	Bolt M10 \times 30 P1.5	1	
	68		91422411010	Nut M10 P1.5	1	
	69		90124110025	Bolt M10 \times 25 P1.5	2	
	70		92121101010	Spring washer M10	2	
	71		91422411010	Nut M10 P1.5	2	
	72		78950050700	Throttle wire	1	
	73		78920059400	Throttle lever	1	
	74		91422411008	Nut M8 P1.25	2	
	75		92300000008	Disk brake washer M8	2	
	76		78920058000	Washer	1	
	77		78920015600	Idler HATP H45	1	
	78		78930015701	Spring	1	
	79		78950050100	Idler arm	1	
	80		91482411012	Nut M12 P1.75	2	
	81		95430002612	Grip (Red) $\varnothing 12$	2	
	82		78930051000	Clutch lever	2	
	83		78930051101	Main change lever	1	
	84		93212206025	Spring pin $\varnothing 6 \times 25$	1	
	85		78920052000	Pin $\varnothing 6 \times 18$	1	
	86		93010002514	Split pin $\varnothing 2.5 \times 14$	1	
	87		78930052600	Pin	1	
	88		93010003230	Split pin $\varnothing 3.2 \times 30$	2	
	89		78920051901	Wire hook	2	
	90		78930053301	Spring	1	
	91		93710000015	Snap ring S15	1	
	92		78930053001	Link (C)	1	
	93		94811000008	R pin $\varnothing 8$ 用	1	

RANK	REF No.	CODE No.	PART No.	PART NAME DESCRIPTION	Qty/unit	MODEL
	94		78930053101	Rod	1	
	95		91422411008	Nut	M8 P1.25 2	
	96		78930053201	L Link	1	
	97		78930051200	Sub change lever	1	
	98		78930051602	Sub change link	1	
	99		93212205025	Spring pin	$\varnothing 5 \times 25$ 1	
	100		33506002000	Return spring	1	
	101		93010003230	Split pin	$\varnothing 3.2 \times 30$ 2	
	102		78930052600	Pin	1	
	103		78920052000	Pin	$\varnothing 6 \times 18$ 1	
	104		93010002514	Split pin	$\varnothing 2.5 \times 14$ 1	
	105		78930053701	Spring	1	
	106		93010002014	Split pin	$\varnothing 2 \times 14$ 4	
	107		78930052501	Rod	2	
	108		91422411006	Nut	M6 P1.0 4	
	109		92121101006	Spring washer	M6 2	
	110		78930052401	Side clutch connector	2	
	111		93212206025	Spring pin	$\varnothing 6 \times 25$ 2	
	112		78930052901	Side clutch pin	1	
	113		78950050300	Side clutch lever (L)	1	
	114		78950050200	Side clutch lever (R)	1	
	115		78930051702	Foot clutch	1	
	116		99910017011	Sticker	2	
	117		92121101012	Spring washer	M12 1	
	118		90124110030	Bolt	M10 \times 30 P1.5 1	
	119		78950050800	Belt guide	1	
	120		93212235025	Spring pin	$\varnothing 3.5 \times 25$ 1	
	121		78920081700	Light code B	1	
	122		78920054900	Fuse holder	1	
	123		78920081301	Light code A Assy	1	
	124		78920081200	Light switch	1	

RANK	REF No.	CODE No.	PART No.	PART NAME DESCRIPTION	Qty/unit	MODEL
	125		78930054500	Plain washer	2	
	126		92121101008	Spring washe	1	M8
	127		78920059100	Robber cap	2	
	128		317241-8322-00	Cap	1	
	129		78220051500	Grip (Brown)	2	



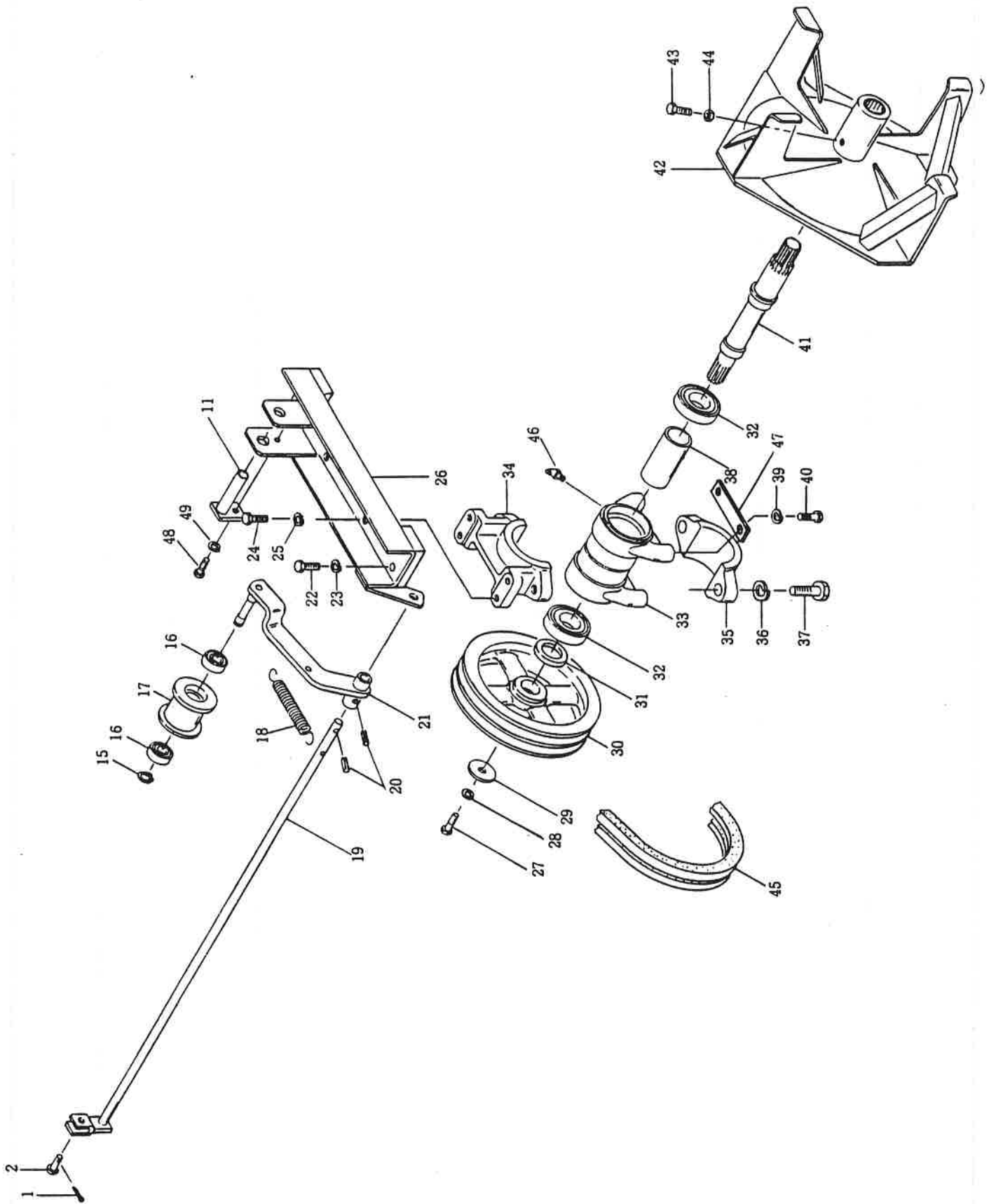
RANK	REF No.	CODE No.	PART No.	PART NAME DESCRIPTION	Qty/unit	MODEL
	1		78930040900	Spacer	2	
	2		78930040700	Hydraulic cylinder 214L×115	1	
	3		93010004030	Split pin $\varnothing 4 \times 30$	2	
	4		78930014200	Cylinder pin (S·L)	1	
	5		78930041100	High-pressure hose (W) A904×900L	2	
	6		78920044800	Nipple 3002F-04	6	
	7		78930040800	Hydraulic cylinder (W) 155L×50	1	
	8		78920044000	Hose clamp	4	
	9		90124108020	Bolt M8×20 P1.25	2	
	10		92121101008	Spring washer M8	2	
	11		91422411008	Nut M8 P1.25	2	
	12		78930041000	High-pressure hose (S) A904×1100L	1	
	13		95702300040	V-belt R-SA40	1	
	14		78950010301	Idler arm (O)	1	
	15		93010003230	Split pin $\varnothing 3.2 \times 30$	1	
	16		78920015600	Idler HATP H45	1	
	17		91482411012	Nut M12 P1.75	2	
	18		78930015701	Spring	1	
	19		90128208025	Bolt M8×25 P1.25 8T	1	
	20		91422411008	Nut M8 P1.25	1	
	21		78930013500	Key 5×5×20	1	
	22		78930012901	Sheave	1	
	23		78930041200	Elbow SJ-EB10×1/4	1	
	24		78920045100	Elbow SJ-E10×1/4	1	
	25		78930040500	Hydraulic unit KPV-50-L3	1	
	26		92121101008	Spring washer M8	4	
	27		90124108020	Bolt M8×20 P1.25	4	
	28		78930041300	Connector SJ-S10×3/8	2	
	29		78930040212	Tube (P)	1	
	30		78930040101	Tube (T)	1	
	31		90401008025	Cap screw M8×25 P1.25	2	

ST-14

Oil Pressure

RANK	REF No.	CODE No.	PART No.	PART NAME DESCRIPTION	Qty/unit	MODEL	
	32		92121101008	Spring washer M8	3		
	33		90401008035	Cap sorew M8×35 P1.25	1		
	34		78930010600	Control valve DD-T03-2A-FR-A-8879A	1		
	35		92121101012	Spring washer M12	1		

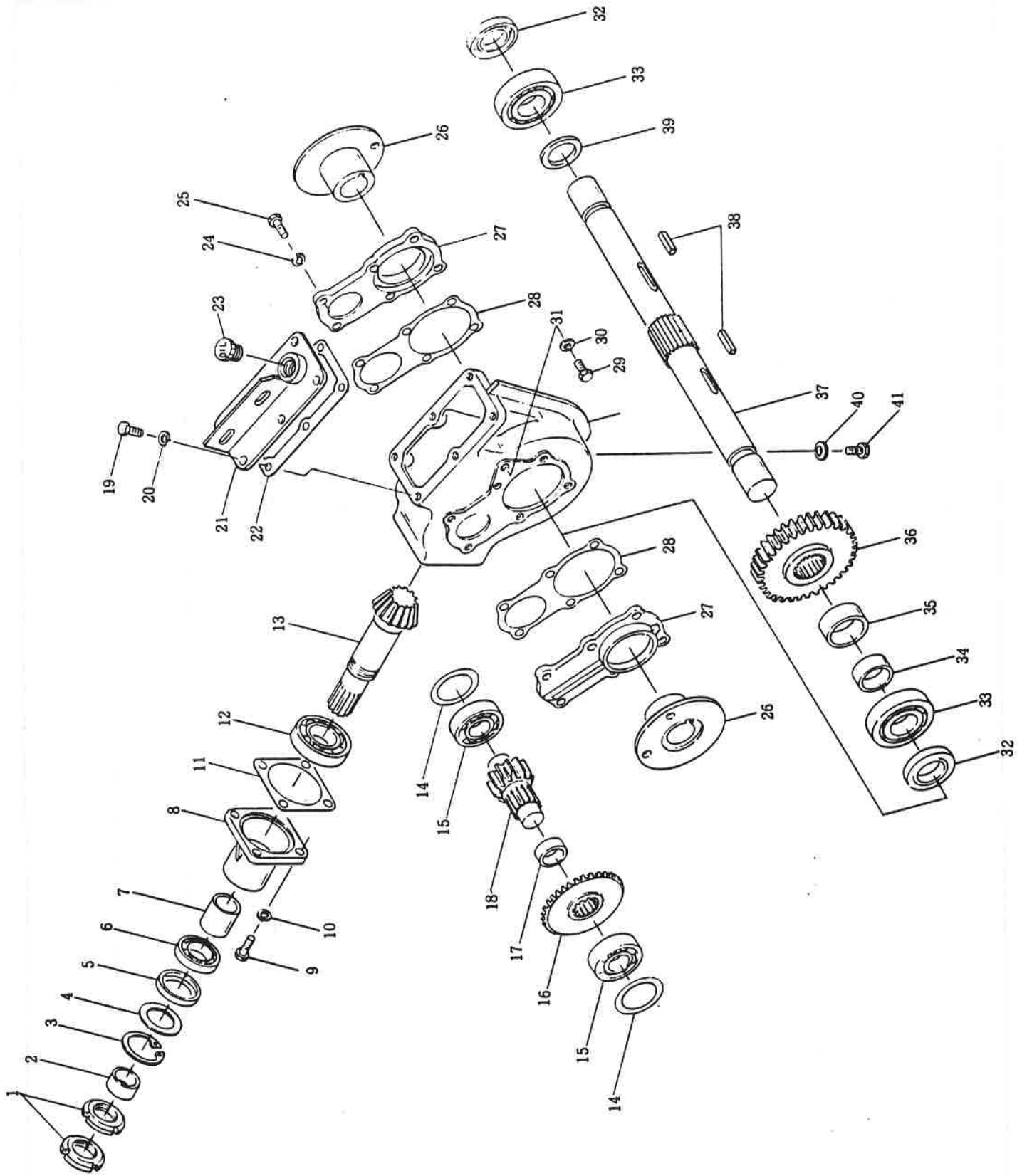
RANK	REF No.	CODE No.	PART No.	PART NAME DESCRIPTION	Qty/unit	MODEL	



RANK	REF No.	CODE No.	PART No.	PART NAME DESCRIPTION	Qty/unit	MODEL
	1		93010002014	Split pin $\varnothing 2.5 \times 14$	1	
	2		78920052000	Pin $\varnothing 6 \times 18$	1	
	3					
	4					
	5					
	6					
	7					
	8					
	9					
	10					
	11		78930014400	PIN	1	
	12					
	13					
	14					
	15		93710000015	Snap ring S15	1	
	16		938062022RS	Bearing #62022RS	2	
	17		79435033100	Sheave	1	
	18		78930023201	Spring	1	
	19		78950020700	Rod	1	
	20		93212405025	Spring pin $\varnothing 5 \times 25$	2	
	21		78950020601	Idler arm (B)	1	
	22		90128210035	Bolt M10×35 P1.5 8T	4	
	23		92121101010	Spring washer M10	4	
	24		90128210025	Bolt M10×25 P1.5 8T	4	
	25		92121101010	Spring washer M10	4	
	26		78930021711	Housing frame	1	
	27		90124108030	Bolt M8×30 P1.25	1	
	28		92121101008	Spring washer M8	1	
	29		78920023600	Plain washer $\varnothing 9 \times \varnothing 40 \times 4.5 t$	1	
	30		78930021202	Sheave	1	
	31		78930022801	Spacer	1	

RANK	REF No.	CODE No.	PART No.	PART NAME DESCRIPTION	Qty/unit	MODEL
	32		938062062RS	Bearing #6 2062RS	2	
	33		78920022701	Bearing housing	1	
	34		78920022500	Housing pivot (U)	1	
	35		78920022601		1	
	36		92121101016	Spring washer M16	2	
	37		90128216045	Bolt M16×45 P2.0 8T	2	
	38		78920024300	Spacer ∅31.7×38.1×88.5	1	
	39		92121101010	Spring washer M10	4	
	40		90128210025	Bolt M10×25 P1.5 8T	4	
	41		78920022302	Blower shaft	1	
	42		78930021101	Blower	1	
	43		78920033801	Bolt M10×25 P1.5	1	
	44		91422411010	Nut M10 P1.5	1	
	45		95704400042	V belt S.W. II-SB42	1	
	46		93320120406	Grease nipple M6 P10	1	
	47		78920028000	Plain washer	2	
	48		90124108015	Bolt M8×15 P1.25	1	
	49		92121101008	Spring washer M8	1	

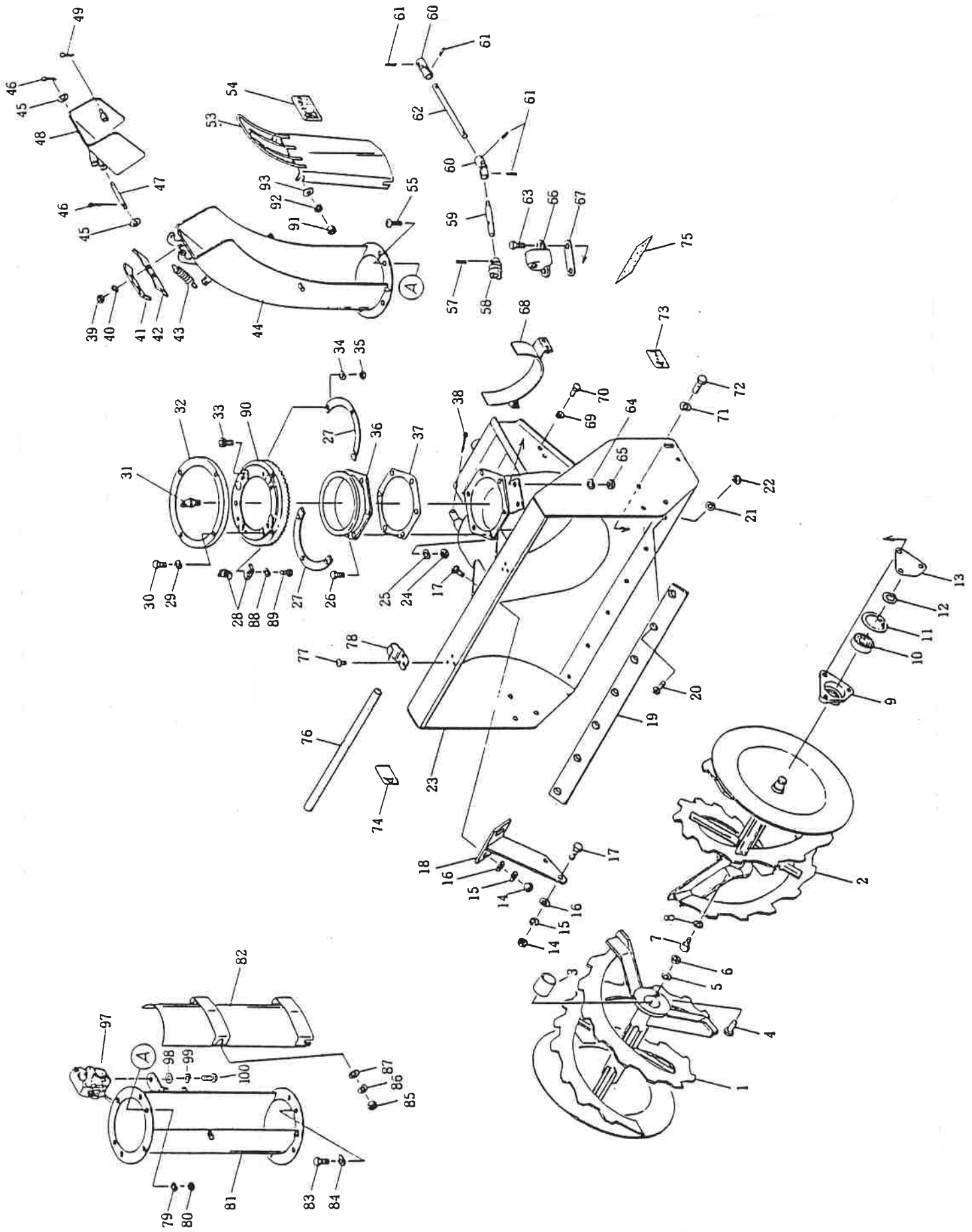
RANK	REF No.	CODE No.	PART No.	PART NAME DESCRIPTION	Qty/unit	MODEL	



RANK	REF No.	CODE No.	PART No.	PART NAME DESCRIPTION	Qty/unit	MODEL
	1		93920000006	Dismounting nut AN06(左)	2	
	2		78920034600	Inner race	1	
	3		93720000050	Snap ring H50	1	
	4		78920031111	Dust cover	1	
	5		93543505008	Oil seal TC35508	1	
	6		93800006906	Bearing #6906	1	
	7		78920032911	Spacer	1	
	8		78920030511	Front housing	1	
	9		90124108025	Bolt M8×25 P1.25	4	
	10		92121101008	Spring washer M8	4	
	11		78920034111	Shim	1 set	
	12		93800006206	Bearing #6206	1	
	13		78920031211	Pinion gear	1	
	14		78920034000	Shim	1 set	
	15		93800006205	Bearing #6205	2	
	16		78920031311	Bevel gear	1	
	17		78920031411	Spacer	1	
	18		78920030600	Gear I	1	
	19		90124108025	Bolt M8×25 P1.25	6	
	20		92121101008	Spring washer M8	6	
	21		78930030300	Mission bracket	1	
	22		78920031500	Packing (A)	2	
	23		95322113020	Oil filler plug	1	
	24		92121101008	Spring washer M8	12	
	25		90124108020	Coating bolt M8×20 P1.25	12	
	26		78920031912	Auger flange	2	
	27		78920030401	Gear case cover	2	
	28		78920031811	Packing (D)	2	
	29		78920030300	Auger gear case	1	
	30		90124108015	Bolt M8×15 P1.25	1	
	31		96601000008	O ring washer M8	1	

RANK	REF No.	CODE No.	PART No.	PART NAME DESCRIPTION	Qty/unit	MODEL
	32		93543505511	Oil seal TC355511	2	
	33		93800006207	Bearing #6207	2	
	34		78920032800	Spacer	1	
	35		78930030400	Sprocket spacer	1	
	36		78920030700	Gear II	1	
	37		78920032012	Auger shaft	1	
	38		78920034200	Key 8×10×30	2	
	39		78920032700	Spacer	1	
	40		96601000010	O ring washer M10	1	
	41		90124110015	Bolt M10×15 P1.5	1	

RANK	REF No.	CODE No.	PART No.	PART NAME DESCRIPTION	Qty/unit	MODEL	



RANK	REF No.	CODE No.	PART No.	PART NAME DESCRIPTION	Qty/unit	MODEL
	1		78950030300	Auger (R)	1	
	2		78950030400	Auger (L)	1	
	3		78920034400	Oilless bearing	2	
	4		90124110025	Bolt M10×25 P1.5	2	
	5		92121101010	Spring washer M10	2	
	6		91422411010	Nut M10 P1.5	2	
	7		46520041100	Hold bolt	4	
	8		92121101012	Spring washer M12	4	
	9		78930030201	Auger metal	2	
	10		938060062RS	Bearing #60062RS	2	
	11		93720000055	Snap ring H55	2	
	12		93710000030	Snap ring S30	2	
	13		78930030800	Plain washer	1 set	
	14		91422411010	Nut M10 P1.5	4	
	15		92121101010	Spring washer M10	4	
	16		92410201010	Plain washer M10	4	
	17		90128210025	Bolt M10×25 P1.5 8T	4	
	18		78930030100	Mission support(O)	1	
	19		78950020500	Scraper	1	
	20		90722108020	Machine screw M8×20 P12.5	7	
	21		92121101008	Spring washer M8	7	
	22		91422411008	Nut M8 P1.25	7	
	23		78950020111	Blower housing	1	
	24		91422411006	Nut M6 P1.0	6	
	25		92121101006	Spring washer M6	6	
	26		90124106020	Bolt M6×20 P1.0	6	
	27		78920021411	Chute clamp	2	
	28		78920026800	Worm wheel	2	
	29		92121101006	Spring washer M6	4	
	30		90124106010	Bolt M6×10 P1.0	4	
	31		93320220406	Grease Nipple M6 P1.0 45°	1	

RANK	REF No.	CODE No.	PART No.	PART NAME DESCRIPTION	Qty/unit	MODEL
	32		78920024900	Worm cover	1	
	33		90401006020	Cap screw M6×20 P1.0	6	
	34		92121101006	Spring washer M6	6	
	35		91422411006	Nut M6 P1.0	6	
	36		78920024811	Chute stand	1	
	37		78930025000	Gasket	1	
	38		93010005030	Split pin $\varnothing 5 \times 30$	1	
	39		91422411006	Nut M6 P1.0	2	
	40		92121101006	Spring washer M6	2	
	41		78920021901	Fixed plate	1	
	42		78930022400	Deflector shield	1	
	43		78920022002	Spring	1	
	44		78930022303	Discharge chute	1	
	45		92410201006	Plain washer M6	2	
	46		93010002515	Split pin $\varnothing 2.5 \times 15$	2	
	47		78920022100	Hinge pin	1	
	48		78920021700	Deflector	1	
	49		93010003020	Spilt pin $\varnothing 3 \times 20$	1	
	50					
	51					
	52					
	53		78920026900	Chute cover	1	
	54		99905020000	Sticker	1	
	55		90715106015	Machine screw M6×15 P1.0	6	
	56		92121101006	Spring washer M6	6	
	57		93212403025	Spring pin $\varnothing 3 \times 25$	1	
	58		78920023801	Worm	1	
	59		78930021801	Worm shaft	1	
	60		78920074600	Joint	2	
	61		93212445020	Spring pin $\varnothing 4.5 \times 20$	4	
	62		78930021902	Joint shaft	1	

RANK	REF No.	CODE No.	PART No.	PART NAME DESCRIPTION	Qty/unit	MODEL
	63		90124108020	Bolt M8×20 P1.25	2	
	64		92121101008	Spring washer M8	2	
	65		91422411008	Nut M8 P1.25	2	
	66		78920023712	Warm clevis	1	
	67		78930022600	Plain washer	1 set	
	68		78930021301	Belt cover	1	
	69		92121101006	Spring washer M6	4	
	70		90124106015	Bolt M6×15 P1.0	4	
	71		92121101010	Spring washer M10	6	
	72		90124110020	Bolt M10×20 P1.5	6	
	73		99905021000	Sticker	1	
	74		99905022000	Sticker	1	
	75		99905023000	Sticker	1	
	76		78920027000	Stick	1	
	77		91115104010	Tapping screw	6	
	78		78920027100	Stick holder	2	
	79		92121101006	Spring washer M6	6	
	80		91422411006	Nut M6 P1.0	6	
	81		78920080315	Extension chute	1	
	82		78920080502	Extension chute cover	1	
	83		90124106015	Bolt M6×15 P1.0	6	
	84		92121101006	Spring washer M6	6	
	85		91412411008	Nut M8 P1.25	2	
	86		92121101008	Spring washer M8	2	
	87		92410201008	Plain washer M8	2	
	88		92121101006	Spring washer M6	2	
	89		90124106020	Bolt M6×20 P1.0	2	
	90		78920026700	Gear plate	1	
	91		91412411008	Nut M8 P1.25	2	
	92		92121101008	Spring washer M8	2	
	93		92410201008	Plain washer M8	2	

RANK	REF No.	CODE No.	PART No.	PART NAME DESCRIPTION	Qty/unit	MODEL
	94					
	95					
	96					
	97		78930080500	Light	1	
	98		92410201008	Plain washer M8	1	
	99		92121101008	Spring washer M8	1	
	100		90124108020	Bolt M8X20 P1.25	1	

BUCHER

BUCHER-GUYER AG
CH-8166 Niederweningen
Telefon 01-857 22 11
Telex 826 499 bgn ch
Telefax 01-857 22 49